

Customer Information Sheet

DRAWING No.: S0951-46R

SHEET 2 OF 2

IF IN DOUBT - ASK

(C)

NOT TO SCALE

THIRD ANGLE PROJECTION

ALL DIMENSIONS IN mm

SPECIFICATION:

MATERIAL:

CONTACT = STAINLESS STEEL, 0.15mm THICK

FINISH:

1.0µm - 3.0µm TIN OVER 0.4µm - 1.5µm NICKEL

ELECTRICAL:

RESISTANCE = 100mΩ MAX

MECHANICAL:

INSERTION FORCE = 9.8N MAX

WITHDRAWAL FORCE = 0.69N MIN

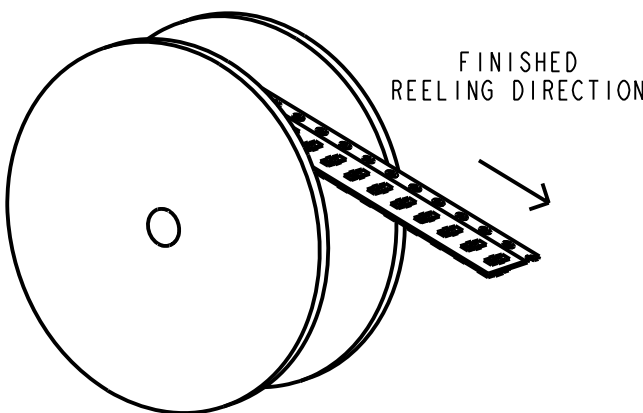
ENVIRONMENTAL:

OPERATING TEMPERATURE = -40°C TO +85°C

STORAGE TEMPERATURE = -40°C TO +85°C

SOLDERING DATA:

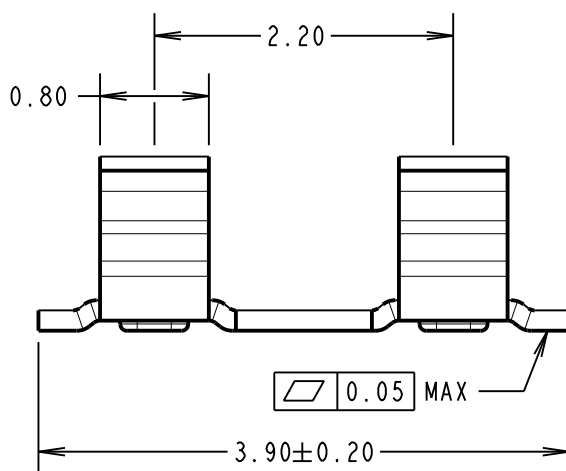
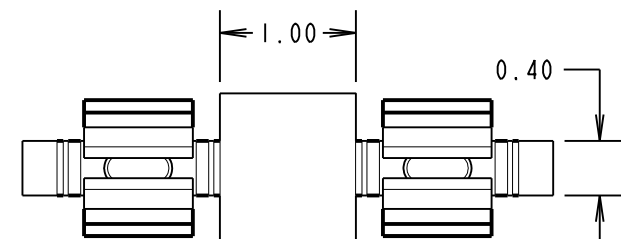
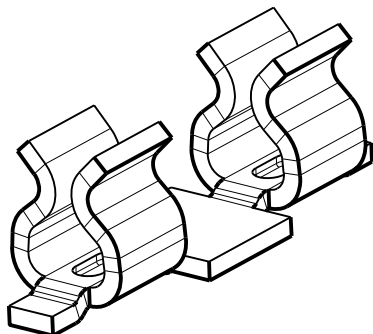
SOLDERING HEAT RESISTANCE = 250°C FOR 5 SECONDS



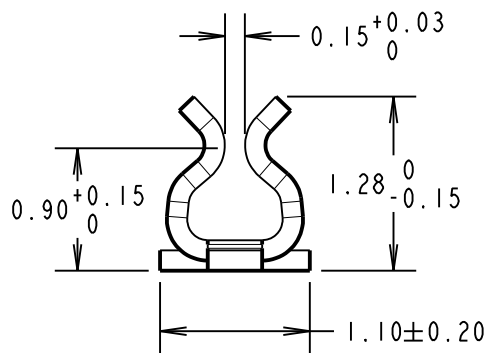
NOTES:

1. FOR USE WITH 0.20mm THICK SHIELD CANS.

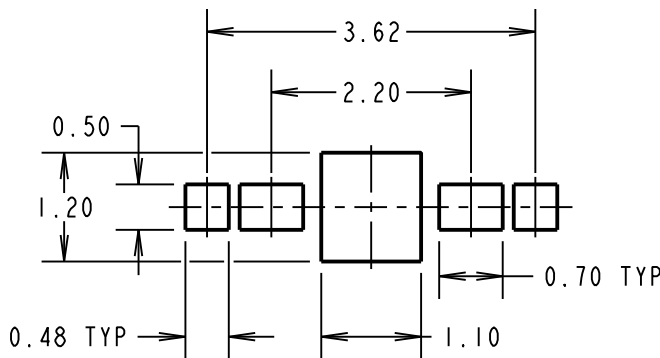
2. QUANTITY PER REEL = 10,000.



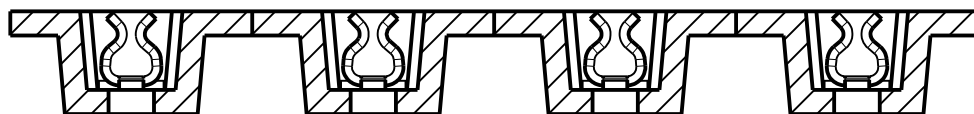
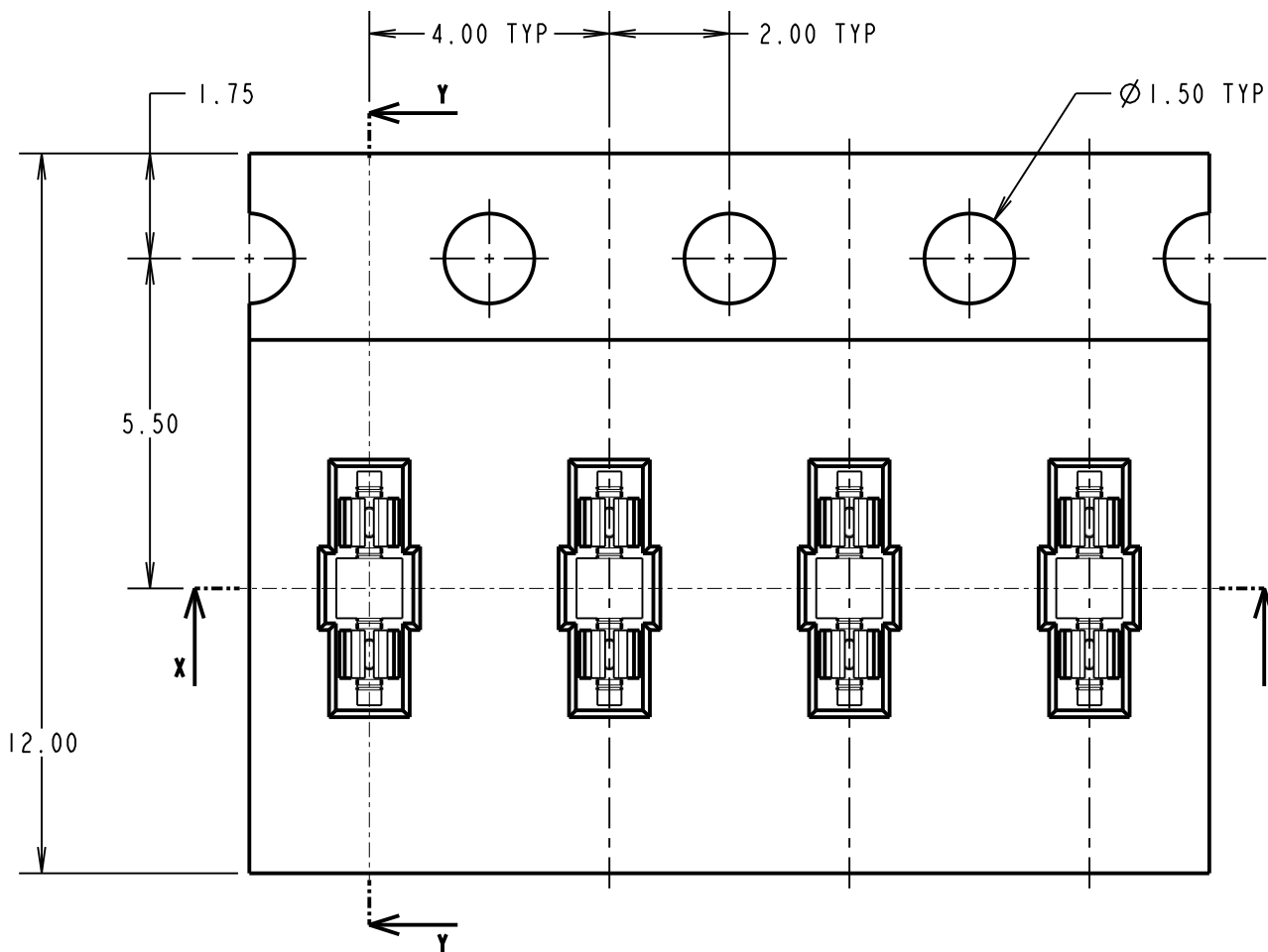
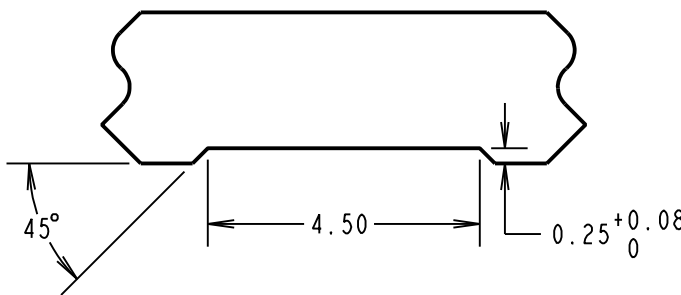
COMPONENT DETAILS



RECOMMENDED PCB LAYOUT (TOLERANCE = ±0.05)



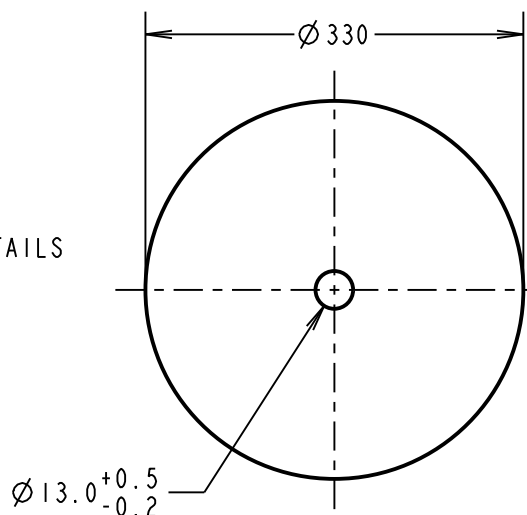
RECOMMENDED SHIELD CAN CUT OUT



SECTION X-X

SECTION Y-Y

REEL DETAILS



MSP	3	12.09.16	13518
NAME	ISS.	DATE	C/NOTE
APPROVED:		M.PERREN	
CHECKED:		S.BENNETT	
DRAWN:		S.BENNETT	
CUSTOMER REF.:			
ASSEMBLY DRG:			

HARWIN

www.harwin.com
technical@harwin.com

THIS DRAWING AND ANY
INFORMATION OR DESCRIPTIVE
MATTER SET OUT HEREON ARE
CONFIDENTIAL AND COPYRIGHT
PROPERTY OF THE HARWIN
GROUP AND MUST NOT BE
DISCLOSED, LOANED, COPIED
OR USED FOR MANUFACTURING,
TENDERING OR FOR ANY
OTHER PURPOSE WITHOUT
THEIR WRITTEN PERMISSION.

TOLERANCES

X. = ±1mm
X.X = ±0.50mm
X.XX = ±0.10mm
X.XXX = ±0.01mm
ANGLES = ±5°
UNLESS STATED

MATERIAL:

SEE ABOVE

FINISH:

SEE ABOVE

S/AREA:

mm²

TITLE:

SMT RFI SHIELD CLIP
IN TAPE AND REEL

DRAWING NUMBER:

S0951-46R

SHT
2 OF 2

Mouser Electronics

Authorized Distributor

Click to View Pricing, Inventory, Delivery & Lifecycle Information:

Harwin:

S0951-46R